



AGENDA
SPECIAL SCHOOL BOARD MEETING

Monday, September 25, 2006 - 9:00 a.m.

School Board Meeting Room

500 E. Ocean Blvd.

Stuart, FL 34994

Call to Order by the Chairman and Pledge of Allegiance to the Flag of the United States

1. **Adoption of the Agenda:***
 - A. **Additions, Deletions or Amendments to the Agenda**
 - B. **Approval of the Agenda**
2. **Open to the Public:***
3. **Approve Recommendation for Re-use of Plans for Elementary "A":* Rodger Osborne (Ex. 3)**
4. **Approve Supplemental (Spot) Survey:* Rodger Osborne (Ex. 4)**
5. **Approve Hurricane Make-Up Days:* Deana Newson (Exhibit to follow)**
6. **Open to the Board:***



UPCOMING MEETINGS: Unless noted otherwise, all School Board Meetings are held at 7:00 p.m. in the School Board Meeting Room, Instructional Center, 500 E. Ocean Blvd., Stuart, FL

REGULAR SCHOOL BOARD MEETINGS

October 17, 2006 – 7:00 p.m.
November 21, 2006-7:00 p.m.
December 12, 2006 – 7:00 p.m.
School Board Meeting Room

Special School Board Meeting
Monday, September 25, 2006 – 9:00 a.m.
School Board Meeting Room

Value Adjustment Board Meeting
Wednesday, October 11, 2006- 9:00 a.m.
County Commission Chamber

**Joint Meeting between the School Board of Martin County, the Board of County
Commissioners,
and the City of Stuart**
Tuesday, January 16, 2007-9:00 a.m.- 11:00 a.m.
Blake Library

169.1 PUBLIC PARTICIPATION AT BOARD MEETINGS.

The Chair shall be guided by the following policies:

- (1) **Time Limit.**-Public discussion, not to exceed one (1) hour, may be scheduled or unscheduled. The Board may, from time to time, waive certain procedural requirements to allow greater public participation in Board meetings. Any waiver, regardless of how frequently made, shall be narrowly construed and not cited or used by other parties seeking to invalidate such procedures or otherwise avoid their impact. Attendees shall register their intention to participate in the public portion of the meeting with the Board clerk.
- (2) **Scheduled Appearances.** In scheduled appearances, any person or group shall be allowed fifteen (15) minutes for the purpose, provided such appearance has been placed on the agenda. Hearing procedures for formal argument and presentation are governed by Bylaw 0169.1.
- (3) **Unscheduled Appearances.** In unscheduled appearances, any person or group who has not made previous arrangements to be placed on the agenda may be heard for not more than five (5) minutes for an individual or group, provided there is time remaining in the public discussion.
- (4) **Remarks Directed to the Board.** When several members of the public or several members of a group share similar opinions on the same issues, a representative, rather than all the members, should address the Board. Persons addressing the Board shall speak into a microphone and direct their remarks to the Board. Staff members shall not be expected to answer questions from the audience unless called upon by the Chair or the Superintendent.
- (5) **Board Action.** Board action will not be taken on requests made during unscheduled appearances during the public discussion period until a later meeting unless the Board declares the matter to be an emergency.

*possible action #exhibit available for review +emergency item

NOTICE OF RIGHT TO JUDICIAL REVIEW

A party who is adversely affected by this Final Order is entitled to Judicial Review pursuant to Section 120.68, Florida Statutes. Review proceedings are governed by the Florida Rules of Appellate Procedure. Such proceedings are commenced by filing one copy of a Notice of Appeal with the School Board Clerk and a second copy, accompanied by filing fees prescribed by law, with the District Court, Fourth District. The notice of appeal must be filed within 30 days of rendition of the order to be reviewed. Rendition is defined as the filing of the Final Order with the Clerk of the School Board of Martin County, Florida. The agency shall accurately and completely preserve all testimony in the proceedings, and, on the request of any party, it shall make a full or partial transcript available at no more than actual cost.

Accommodations are available for persons with special needs. Please call 219-1200 X 425 for assistance

THE SCHOOL BOARD OF MARTIN COUNTY, FLORIDA
FACILITIES DEPARTMENT

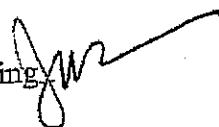


500 East Ocean Blvd., Stuart, Florida 34984 • Telephone (772) 219-1200 • Facsimile (772) 221-4912

Julie L. Sessa
Director of Facilities & Planning
Ext. 30475

Garret Grabowski, Construction Manager, Ext: 30285
J. Lisle Bozeman, Capital Projects/Planning Specialist, Ext: 30211
James Copeland, Building Official, (772) 219-1580 Ext: 230
Mark Cocco, Operations Manager, (772) 219-1275
Chris D. Singley, Maintenance Manager, (772) 219-1275

MEMO 06-052

TO: Sara A. Wilcox, Superintendent
FROM: Julie L. Sessa, Director of Facilities and Planning 
DATE: September 18, 2006
SUBJECT: Re-Use of Plans for Elementary A - Tuscawilla PUD

As you are aware, August 15, 2006 we presented to the Board the Post Occupancy Evaluation completed on Hobe Sound Elementary, J.D. Parker Elementary and Port Salerno Elementary schools for the purpose of assisting the Board in their decision with regard to re-use of elementary school design.

In order to further assist the Board in the decision making process, please find the following additional information gathered by the Facilities Department:

Post Occupancy Survey Results - Attachment A
Building Efficiency Ratio - Attachment B
Electrical Usage - Attachment C
Site Suitability - Attachment D- 1, D-2
Letters of Commitment from both Architectural Firms - Attachment E and F.

After review of the above information, the Facilities Department recommends that either Hobe Sound or J.D. Parker be considered as candidates for re-use. The attached data is provided to the Board to assist in the selection of a design for re-use for Elementary A.

Please feel free to contact me with any questions.

CC: School Board Members
Rodger Osborne, Executive Director of Operations

Dr. Sara A. Wilcox, Superintendent of Schools
School Board Members: Dr. David L. Anderson • Laurie Gaylord • Susan J. Hershey • Nancy Kline • Lorie Shekailo

"An Equal Opportunity Agency"

AUG 25 2006

3
1710

Post Occupancy Evaluation

MAJOR SURVEY FACTORS

Attachment A

	Hobe Sound Elementary	J. D. Parker Elementary	Port Salerno Elementary
Overall Satisfaction	91.70	91.00	99.60
Safety	91.70	100.10	100.00
Convenience	91.60	72.70	100.10
Group Interaction	91.70	91.00	91.70
Function	91.60	100.10	100.00
Flexibility	75.00	91.00	99.90
HVAC	82.90	81.90	75.00
Lighting Artificial	83.40	91.00	83.30
Lighting Natural	91.70	100.10	83.30
Acoustics	83.30	72.80	83.40
Traffic Patterns	83.30	91.00	100.00
Average	87.08	89.34	92.39

AUG 25 2006

3

2110

Comparison of Building Efficiency and Costs of Construction by School

9/18/2006

Attachment B

School Name	Number of Student Stations from 208A	Number of Classroom from 208A	Gross Square Footage from 208A	Net Square Footage from 208A	Building Efficiency Ratio	Total Facility Costs GMP	Total Cost per Student Station	Total Cost per Square Foot
Hobe Sound Elem.	821	42	119,508	96,123	80%	\$ 14,282,699.00	\$ 17,396.71	\$ 119.51
J.D. Parker Elem.	806	37	120,398	83,000	69%	\$ 16,210,000.00	\$ 20,111.66	\$ 134.64
Revised JDP Plans	806	37	105,000	83,000	79%	\$ 15,500,000.00	\$ 19,230.77	\$ 147.62
Port Salerno Elem. *	923	39	108,505	85,728	79%	\$ 12,269,345.00	\$ 13,292.90	\$ 113.08

* - PSE Student Stations listed are prior to Class Size Reduction. When CSR is applied the Student Stations for this facility calculate to approx. 739. Also, PSE was completed in August of 2004 hence, the construction costs are lower than JDP and HSE which were completed in 2005.

Definitions:

Form 208A is a Facility Space Chart required by DOE and completed by the architect to list the Gross and Net square footages of a facility.

Gross Square Footage (GSF) is all of the floor space inside a building measured from the outside surfaces of exterior walls. GSF includes all of the building that you have to build; including hallways, stairwells, and floor area under interior walls.

Net Square Footage (NSF) is the net floor space in a building measured from the inside surfaces of exterior walls and excluding interior walls, mechanical equipment rooms, stairways, elevators, and major circulation corridors. In essence, it's those areas of the building that can be assigned to an individual program, department or user.

"Building Efficiency Ratio" is the percentage of a building that can actually be assigned for use. The higher the percentage the better.

Total Cost Per Student Station is the total GMP divided by the number of Student stations. HSE and JDP are 2005 figures, PSE is 2004 cost. The revised JDP plans are 2006 construction costs.

Total Cost Per Square Foot is the total GMP divided by the GSF. HSE and JDP are 2005 construction cost figures. PSE is 2004 cost. The revised plans JDP plans are 2006 construction costs.

AUG 25 2006
3
3710

Comparison of Average Electrical Usage by School

Attachment C

School Name:	Average # of Days	Average KWH/ Month	Average KWH/ Day	Average Overall Cents/KWH	Average Actual Demand KWD	Average Base Electrical	Average Electrical Amount	Facility Gross Sq. Ft.	Average KWH Per Sq. Ft.
Hobe Sound Elementary	30	204,677	6,747	10.17	532	\$ 19,793.00	\$ 20,300.00	119,508	\$ 1.71
J.D. Parker Elementary	30	151,580	4,991	9.8	395	\$ 13,501.27	\$ 14,589.76	120,398	\$ 1.26
Port Salerno Elementary	30	242,120	7,970	8.94	572	\$ 22,334.98	\$ 22,564.05	108,505	\$ 2.23

Notes:

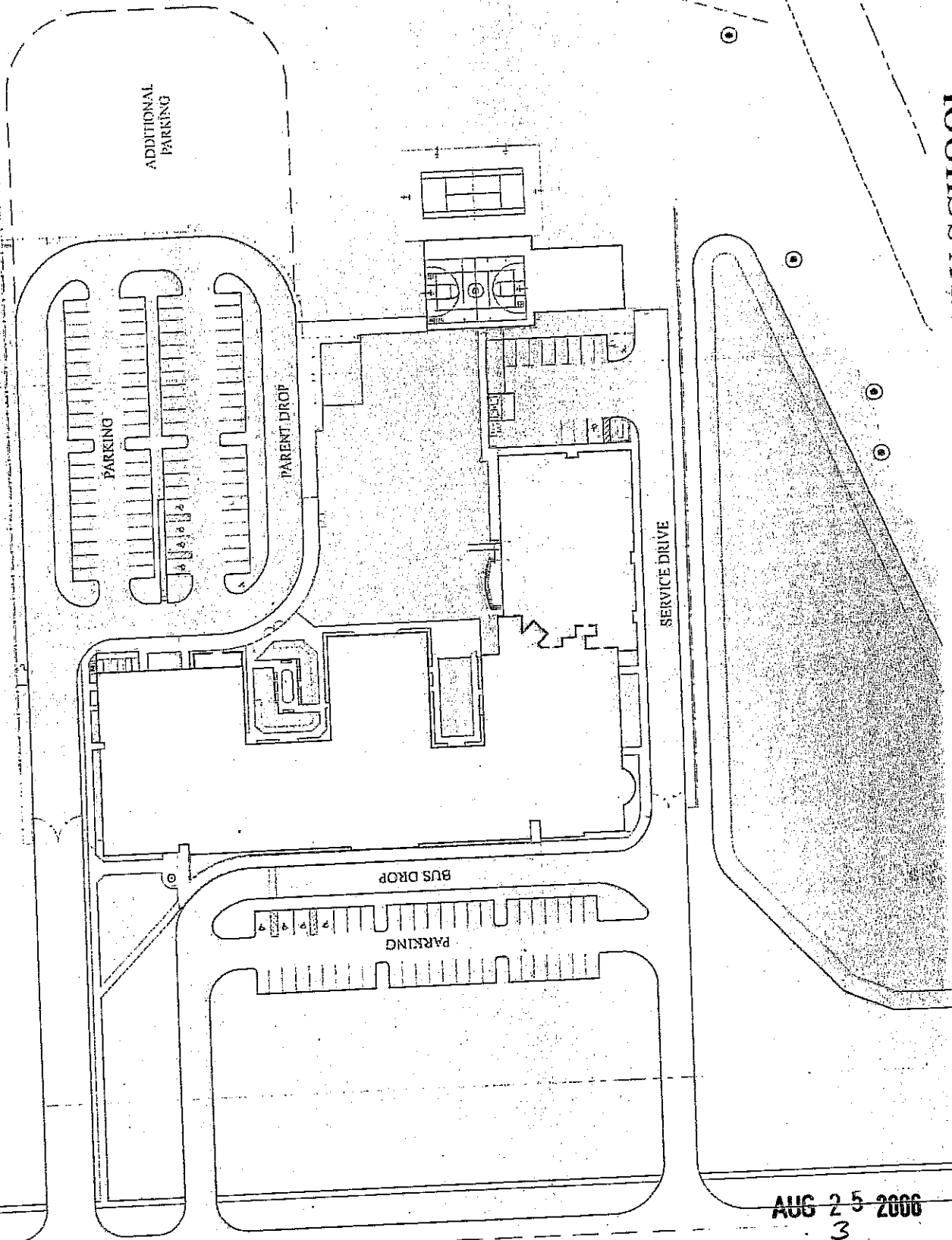
Information provided by FPL representative Lou Zorzi. Averages listed above are 12 month averages from September 2005 through August 2006. HSE information represents a 5 month average due to FPL billing issue.

KWH = Kilowatt Per Hour
 KWD = Kilowatt Per Day

Last Three Month Average (Jun 2006 through August 2006 with Summer Savings Program, Energy Management)

School Name:	Average # of Days	Average KWH/ Month	Average KWH/ Day	Average Overall Cents/KWH	Average Actual Demand KWD	Average Base Electrical	Average Electrical Amount	Facility Gross Sq. Ft.	Average KWH Per Sq. Ft.
Hobe Sound Elementary	30	164,000	5,406	10	543	\$ 16,708	\$ 17,136.30	119,508	\$ 1.37
J.D. Parker Elementary	30	117,280	3,864	9.8	388	\$ 11,872.78	\$ 12,892.75	120,398	\$ 0.97
Port Salerno Elementary	30	236,160	7,777	8.94	567	\$ 22,329.47	\$ 22,902.02	108,505	\$ 2.18

Prototype Reuse - Hobe Sound ES



TUSCAWILLA ELEMENTARY SCHOOL

AUG 25 2006

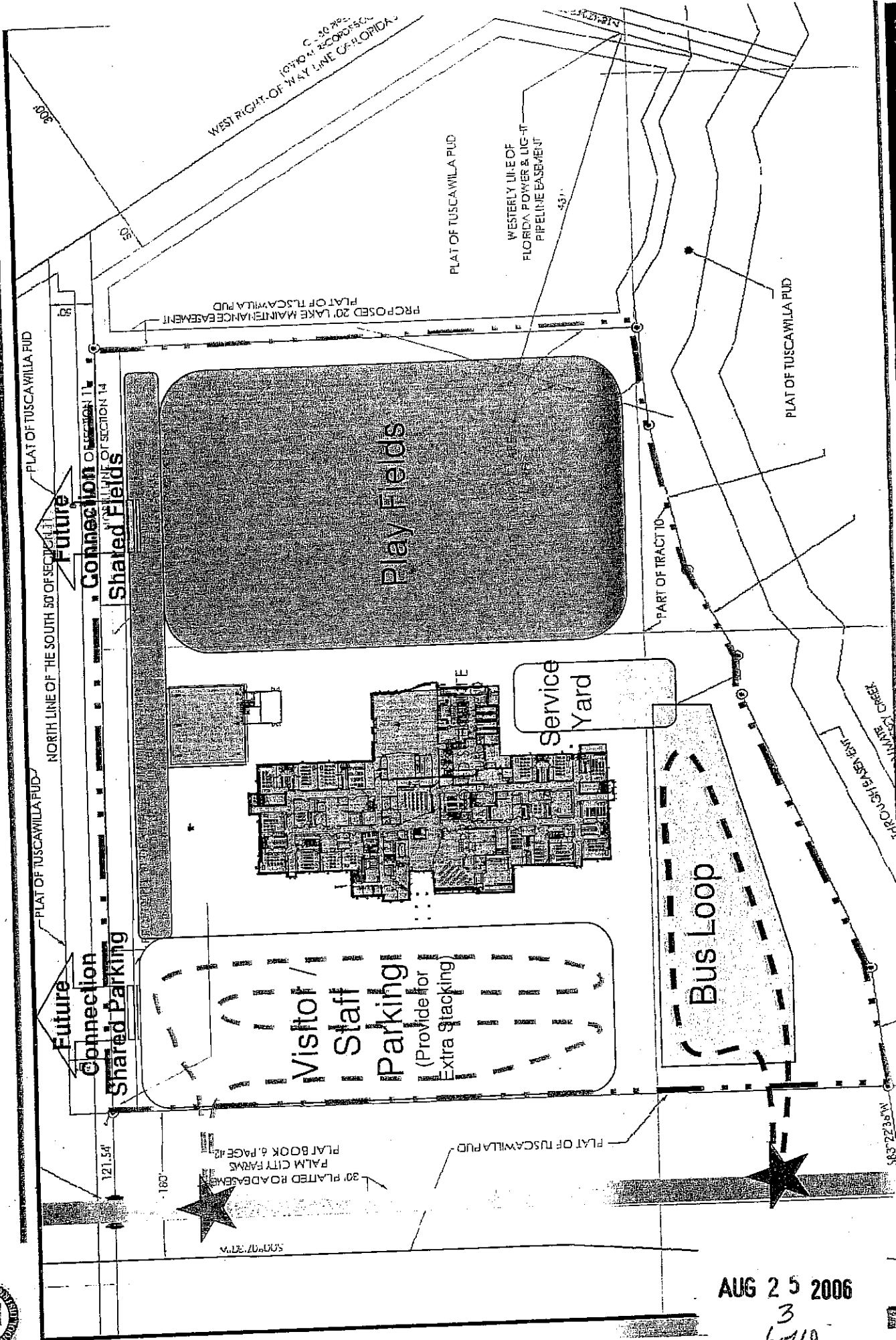
3

5/10



Prototype Reuse- JD Parker ES

D-2



AUG 25 2006
 3
 60910

HARVARD JOLLY

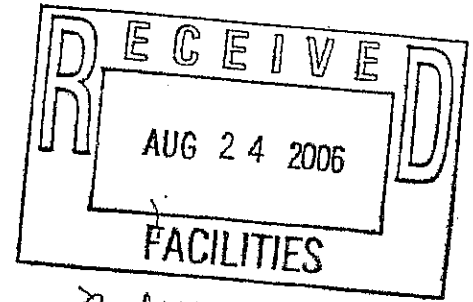
New Elementary School Prototype

MARTIN COUNTY SCHOOL DISTRICT

Attachment E

August 23, 2006

Ms. Julie L. Sessa
Director of Facilities and Planning
Martin County School District
500 East Ocean Boulevard
Stuart, Florida 34994



cc: Rodger ✓
Garret gmw

Dear Julie:

Song + Associates has had the privilege of providing architectural design services to the Martin County School District for over five years and takes great pride in the development of our excellent working relationship which definitely contributed to the success of Hobe Sound Elementary as well as all the Martin County schools that we have been involved in.

I understand that the School District is in the process of selecting a prototype for its next elementary school, scheduled for an August 2008 opening, and that Hobe Sound Elementary School is one of the prototypes being considered. As you know, our Song + Associates team worked closely with your staff, Mrs. Raines and members of her staff on the design of this top award-winning school.

Our educational team is comprised of 22 professionals, however, if the Hobe Sound Elementary School prototype is selected, the team members chosen for the new elementary school will include those that you and your staff know and have worked with over the years. You and the School Board have my personal commitment that these team members will be involved from the beginning of the project through occupancy and beyond. I will personally be involved with a "hands-on" active role in every aspect. Other team members include:

- Mike Trader, as Project Manager, will manage the project from the onset through construction. Mike has been with Song + Associates for more than 13 years and has an excellent working relationship with the Martin County School District.
- Sandra Player, as Project Director, will be actively involved in the project from negotiations through move-in, ensuring that the project stays on schedule, there is clear communication among all parties involved and issues are addressed thoroughly and in a timely manner. Sandra has 28 years construction experience, and prior to joining Song + Associates was with the School District of Palm Beach County for 10 years where she was a Senior Projects Administrator. Her experience with the School District has proven to be a tremendous asset for the Song + Associates Team as she has helped our educational projects run efficiently and with great accolades from our clients.
- Ray Manning, AIA, REFP, as Project Designer and Project Architect, will ensure the design of the project meets the School District's standards and needs and all applicable codes. Ray has been with Song + Associates over four years and is involved with all our educational projects. Due to Ray's close working relationship with the Martin County School District including Hobe Sound Elementary, Ray has personally made his commitment to be the Project Designer and the Architect of Record for this project.
- Frank Spencer, as Job Captain, will coordinate the in-house staff and project consultants and manage the day-to-day communication among all team members. Frank has been with Song + Associates for four years, working solely on educational facilities.

Song + Associates, Inc.
Architecture • Planning • Interior Design
AA0003165 / IB0001095

400 Australian Avenue South, Sixth Floor
West Palm Beach, Florida 33401
telephone: 561.655.2423 fax: 561.655.1482

American Institute of Architects / NCARB

AUG 25 2006

3
7-110

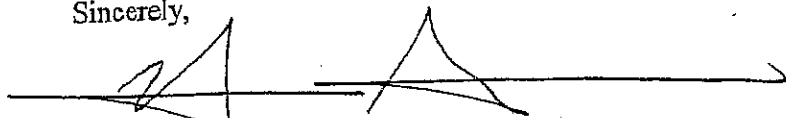
Ms. Julie L. Sessa
August 23, 2006
Page 2

- David Glover, as Construction Administration, will perform the same function as he did on Hobe Sound Elementary. David's in-depth knowledge of Hobe Sound Elementary will make for a very smooth and efficient construction phase for the new elementary school. David wants to personally make sure that this project is as successful as Hobe Sound Elementary.

We are presently finishing the construction documents for the new K-8 school for Duval County and will be completed on September 5, 2006. We will then have the availability to give you our full focus and will undoubtedly be able to meet your August 2008 deadline.

Once again, thank you for considering Hobe Sound as an elementary school prototype and I have the utmost confidence in my team to service the Martin County School District with the level of excellence they so richly deserve and has come to expect from us.

Sincerely,

A handwritten signature in black ink, appearing to read 'Young Song', is written over a horizontal line. The signature is stylized and somewhat abstract.

Young Song, AIA, PE, ASID
President

AUG 25 2006
3
8410



September 11, 2006

Architecture
Interior Design
Planning
Programming
Landscape
Program Management

Ms. Julie L. Sessa
Director of Facilities and Planning
Martin County School District
500 East Ocean Blvd
Stuart, FL 34994

BOARD OF DIRECTORS
R. John Glees, AIA
Jeffrey E. Gobble, AIA
Ward J. Friszolowski, AIA
Alejandro F. Gonzalez, AIA
Michael K. Hart, AIA
William B. Harvard, Jr., AIA
Steven M. Heiser, AIA
Ronald N. Lang, AIA
Yvette V. Londen, AIA
James A. Shawhan, AIA
Blanchard E. Jolly, Emeritus

Re: Elementary School Prototype Design Reuse

Dear Julie,

Harvard Jolly, Inc. is pleased to provide you with the following information in response for your consideration of reuse of J.D. Parker Elementary School.

Since the design and completion of the J.D. Parker project, our elementary school prototype has evolved and is currently being constructed in three locations in the School District of Collier County. Additionally, two more schools are anticipated to start within the next few months within the same District.

Collier County challenged us to maintain or reduce the overall square footage of the J.D. Parker prototype, while adding an additional 204 student stations. This addition of student stations incorporated the Class Size Amendment. These goals were implemented with the following space and cost saving solutions:

- classrooms were designed at approximately 800 SF (for the reuse in Martin County we anticipate to keep the average classroom size at 900 SF)
- the first and second floor plans were aligned to simplify the structural system and improve construction sequencing.
- the core area for support spaces was modified resulting in a better efficiency of the net to gross ratio.

Also, at the district's request, the Art Room was relocated adjacent to the Music Room and Stage area on the ground floor.

The slightly modified floor plan remains very compact while allowing for efficient and flexible site adaptations. The footprint provides for ample space in the separation of the bus loop, delivery drive, drop-off and visitor/staff parking areas. The athletic and play fields would be located remotely from the vehicular traffic areas.

Currently, the J. D. Parker School could be rebuilt on the proposed site without any modifications. It is with our recommendation to consider some of these valued design implementations as described above. These decisions will be made as a total team approach and be included as a refinement of the original prototype.

The anticipated project schedule will includes any modifications to the prototype as previously described and is based on the following milestones and conditions:

3201 W. Commercial Blvd.
Suite 225
FL. Lauderdale, FL 33309
954-486-7910

www.HarvardJolly.com
AAC000119

AUG 25 2006

3

9410

Task	Duration	Start Date	Completion Date
Contract Award	2 weeks	Sept. 19, 2006	October 1, 2006
Site Adaptation & Ed Spec validation	1 month	October 2, 2006	November 1, 2006
Owner's Review	2 weeks	Nov 2, 2006	November 16, 2006
Construction Documents Final Site Design Package Start of Permitting (Total of 3 months)	9 weeks	Nov. 17, 2006	January 19, 2007
Owner's and DOE Review	5 weeks	January 20, 2007	February 28, 2007
A/E incorporate Owner's and DOE Comments	2 weeks	March 1, 2007	March 14, 2007
Bid/Negotiation & Contract Award	6 weeks	March 15, 2007	April 30, 2007
New Construction	12 months	May 1, 2007	April 30, 2008
Final Completion	1 month	May 1, 2008	June 1, 2008
Owner Move-In	1 month	June 1, 2008	July 1, 2008

We propose the following proven project team members, which you very familiar with. We have considerable experience with the Martin County Standard Facility List and district design criteria requirements while offering expertise in K-12 Educational design:

- Mr. Jeffrey Cobble, AIA, CPTED, Executive Vice President - Principal in Charge
- Ms. Yvette London, AIA, Senior Vice President - Project Manager
- Ms. Debbie DeBartolo Wilkinson, AIA - Project Architect
- Ms. Brittney Jorth, Project Coordinator
- Mr. Roger Bolling, AIA - Quality Assurance and Quality Control
- Mr. Jim Cleese, ASLA - Landscape Architecture
- Ms. Jackie Spears, ASID - Interior Design
- Mr. John Rhodes, Construction Administration

Sub-Consultant Team:

- Smith Dell Associates, Inc - MEP and Communication consultant
- McCarthy and Associates - Structural Engineer
- Creech Engineering - Civil Engineering
- SSA Associates, Inc. - Food Service consultant

This project team is fully committed and ready to continue to serve the District. Our work load is such that we can start on your project immediately and all previous work for the Martin County School District has been completed.

We look forward to working with you on another successful project.

Sincerely,

Yvette V. London, AIA
 Senior Vice President
 Harvard Jolly, Inc.

AUG 25 2006

3

10/10

SPOT (SUPPLEMENTAL)
EDUCATIONAL PLANT SURVEY

This spot survey provides for the transfer of portables and student stations from "Martin County Transition School" to "Spectrum Junior Senior High School".

SEP 25 2006

4

10/6

Date: 22-SEP-2006
Time: 10:55:00

FLORIDA DEPARTMENT OF EDUCATION 5 YEAR SURVEY RECOMMENDATION

SURVEY YEAR 2005-2010
SURVEY 3 VERSION 2
STATUS Active Pending

PRINT
Back
Menu

District Name: MARTIN COUNTY SCHOOL DISTRICT
Facility Name: MARTIN COUNTY TRANSITION SCHOOL
Address: 615 SE LAKE ST., STUART

Building	Description/Project or Work Item	Approx. Area (Sq. Ft.)	Student Stations Added/Reduced (+ or -)	Estimated Total Project Cost (\$)	Project Cost/NSF (\$/NSF)	Project Cost/Stu. Sta. (\$/Stu. Sta.)
	A (STANDARD SCHOOL)					
	SCHOOL RECOMMENDED FOR CONTINUED USE					
	10 - ALTERNATIVE EDUCATION					
	PK 12			0		
				0		
				0		
			0			
			150			
			150			
			150			
		4,892	-150		0	0
	Transfer all relocatables to Spectrum Jr/St				0	
00089						
	REMODEL					
	Total Cost			0		
	Recommended Permanent Student Stations			0		
	Recommended Relocatable Student Stations			0		
	Recommended Total Student Stations		100%			
	Utilization Factor			0		
	Recommended FTE Student Membership To Be Housed			0		
	Recommended School Capacity					
	District Comments	Transfer Parcel #00034 & buildings to Spectrum Jr/St High due to closure of Martin County Transition				

PRINT

SEP 25 2006

4
206

FLORIDA DEPARTMENT OF EDUCATION 5 YEAR SURVEY RECOMMENDATION

SURVEY YEAR 2005-2010
SURVEY 3 VERSION 2
STATUS Active Pending

PRINT
Back
Menu

District Name: MARTIN COUNTY SCHOOL DISTRICT
Facility Name: SPECTRUM JUNIOR SENIOR HIGH
Address: 738 CHURCH STREET, STUART

Building	Description/Project or Work Item	Approx. Area (Sq. Ft.)	Student Stations Added/Reduced (+ or -)	Estimated Total Project Cost (\$)	Project Cost/NSF (\$/NSF)	Project Cost/Stu. Sta. (\$/Stu. Sta.)
	A (STANDARD SCHOOL)					
	SCHOOL RECOMMENDED FOR CONTINUED USE					
	10 - ALTERNATIVE EDUCATION					
	06 12					
	Raze Bldg # 1 - 4,138 NSF - Bldg # 2 - 3,602 NSF - Bldg # 3 - 1,946 NSF			-9,686		
	Recommended Site Development					
	Recommended Site Improvement		142			
	Existing Permanent Student Stations		0			
	Existing Relocatable Student Stations		142			
	Existing Student Stations		142			
	Existing School Capacity	4,515	150			
00099	6 Sr High classrooms (from Martin County Transition School)	377	0			
00099	RR and storage (from Martin County Transition School)	4,088	0	185,513	45	0
00004	Renovate All Spaces as Needed	3,149	0	142,902	45	0
00005	Renovate All Spaces as Needed					

SEP 25 2006

4
346

FLORIDA DEPARTMENT OF EDUCATION 5 YEAR SURVEY RECOMMENDATION

SURVEY YEAR 2005-2010
SURVEY 3 VERSION 2
STATUS Active Pending

PRINT
Back
Menu

District Name: MARTIN COUNTY SCHOOL DISTRICT
Facility Name: SPECTRUM JUNIOR SENIOR HIGH
Address: 738 CHURCH STREET, STUART

	Building	Description/Project or Work Item	Approx. Area (Sq. Ft.)	Student Stations Added/Reduced (+ or -)	Estimated Total Project Cost (\$)	Project Cost/NSF (\$/NSF)	Project Cost/Stu. Sta. (\$/Stu. Sta.)
RENOVATE	00006	Renovate All Spaces as Needed	2,438	0	110,636	45	0
RENOVATE	00007	Renovate All Spaces as Needed	3,307	0	150,072	45	0
RENOVATE	00008	Renovate All Spaces as Needed	3,812	0	172,989	45	0
Total Cost				142	771,798		
Recommended Permanent Student Stations				150			
Recommended Relocatable Student Stations				292			
Recommended Total Student Stations				100%			
Utilization Factor				179			
Recommended FTE Student Membership To Be Housed				292			
Recommended School Capacity		Transfer Parcel #00034 with buildings from Martin County Transition School					
District Comments							

PRINT
Back

SEP 25 2006
4
4-76

FLORIDA DEPARTMENT OF EDUCATION 5 YEAR SURVEY TABLE II

SURVEY YEARS 2005 - 2010
SURVEY 3 VERSION 2
STATUS Active Pending

PRINT
Back
Menu

District: 00043 - MARTIN COUNTY SCHOOL DISTRICT

TABLE II	RECOMMENDED FTE STUDENT MEMBERSHIP TO BE HOUSED				EXISTING SATISFACTORY STUDENT STATIONS	NET CHANGE IN STUDENT STATION REMODELING	
	MEMBERSHIP TO BE HOUSED			Total		PLUS	MINUS
	K-5	6-8	9-12				
SCHOOL CENTER							
ELEMENTARY	738	0	0	738	661		-116
BESSEY CREEK ELEMENTARY	737	0	0	737	710		-131
CRYSTAL LAKE ELEMENTARY	735	0	0	735	749		-149
FELIX A WILLIAMS ELEMENTARY	812	0	0	812		0	
HOBBS SOUND ELEMENTARY	795	0	0	795	804		-75
J D PARKER SCHOOL OF SCIENCE, MATH, AND TECHNOLOGY	747	0	0	747	775		-28
JENSEN BEACH ELEMENTARY	747	0	0	747	857		-209
NEW FACILITY A (ELEMENTARY)	757	0	0	757	752		-135
PALM CITY ELEMENTARY	748	0	0	748	757		-9
PINWOOD ELEMENTARY	766	0	0	766	599	22	-136
PORT SALERNO ELEMENTARY (NEW)	766	0	0	766	911		-145
SEAWIND ELEMENTARY	8,639	0	0	8,639	8,396		-243
WARFIELD ELEMENTARY							
SUB TOTAL							
MIDDLE							
HIDDEN OAKS MIDDLE	0	1,230	0	1,230	1,643		-264
MURRAY MIDDLE	0	1,195	0	1,195	1,192		-1,192
NEW FACILITY AA (MIDDLE)	0	649	0	649	0	0	
STUART MIDDLE	0	1,195	0	1,195	1,553		-873
SUB TOTAL							
SENIOR HIGH							
JENSEN BEACH HIGH SCHOOL	0	0	1,774	1,774	1,731	0	-1,859
MARTIN SENIOR HIGH	0	0	1,788	1,788	2,804		-691
SOUTH FORK SENIOR HIGH	0	0	1,853	1,853	2,456		-2,450
SUB TOTAL							
COMBINATION							
INDIANTOWN MIDDLE	0	226	0	226	1,020		-756
SUB TOTAL							

SEP 25 2006
4
546

